

**NO
TIME
TO
DIE** 007[™]

DB5



Pack 11

BUILD INSTRUCTIONS

**STAGE 085: FITTING THE LEFT SIDE
STRAKE, CASING EJECTOR PORTS
AND REAR LEFT LIGHTS**

**STAGE 086: FITTING THE RIGHT SIDE
STRAKE, CASING EJECTOR PORTS
AND REAR RIGHT LIGHTS**

**STAGE 087: ATTACHING THE
REAR RIGHT WHEEL ARCH**

**STAGE 088: ATTACHING THE
REAR LEFT WHEEL ARCH**

**STAGE 089: MOUNTING THE REAR FRAME
AND BOOT HINGES**

**STAGE 090: FITTING THE
BOOT LID CARPET**

**STAGE 091: ATTACHING THE BOOT LID
FRAME AND FRONT GRILLE**

**STAGE 092: ATTACHING THE REAR
NUMBER PLATE AND BOOT LID**

NO TIME TO DIE © Danjaq, LLC and Metro-Goldwyn-Mayer Studios Inc. NO TIME TO DIE, 007[™] and related James Bond Indicia © 1962-2024 Danjaq, LLC and Metro-Goldwyn-Mayer Studios Inc. NO TIME TO DIE, 007[™] and related James Bond Trademarks are trademarks of Danjaq, LLC. All Rights Reserved.



Aston Martin, the Aston Martin Wings logo and the model name "DB5" are trademarks owned, licensed or used by Aston Martin Lagonda Limited. All Rights Reserved.

Advice from the experts

Spare screws are included with each part. Occasionally, you may be instructed to keep spare or unused screws for a later stage. Keep these spares in a safe place and label them correctly.

Please make sure you don't mix up the screws. They look quite similar, but the threads do vary slightly. Using the wrong screws may damage the parts.

When securing parts together using multiple screws, fit each screw loosely to ensure all the parts are correctly aligned before gently tightening them firmly, but not overtight, in the order in which you placed them.

The screwdriver can be magnetized by stroking it with a magnet (fridge magnet, etc.) enabling it to hold the screws and make assembly easier.

If a screw is tight going into a metal part, do not force it as you may shear the head off. Remove it and put a tiny smear of Vaseline, soap or light oil on the thread. That will lubricate it and make it easier to drive home.

During the course of this build, you will receive many pieces that you will assemble immediately – following the instructions in the corresponding stage – and other pieces that you should store safely to one side, for use in future assembly stages.

Left and Right! When building your *No Time To Die* Aston Martin DB5, the left- or right-hand side refers to that side as if you are sitting in the car.



WARNING: Some parts are assembled using magnets. These magnets can cause serious injury if they are swallowed. Keep away from children. If you suspect a magnet has been swallowed, seek medical help straight away.

Stage 085: Fitting the Left Side Strake, Casing Ejector Ports and Rear Left Lights

In this stage you'll fit the casing ejector ports, hidden inside the side strake, on the left side of the model along with the rear left lights.



STAGE 085 PARTS LIST

Name
85-A Side strake
85-B Casing ejector port x2
85-C Rear light trim
85-D Reverse light
85-E Brake light
85-F Indicator light
85-G Brake light LED '13'
PS02 screws x2



Stage 085: Fitting the Left Side Strake, Casing Ejector Ports and Rear Left Lights



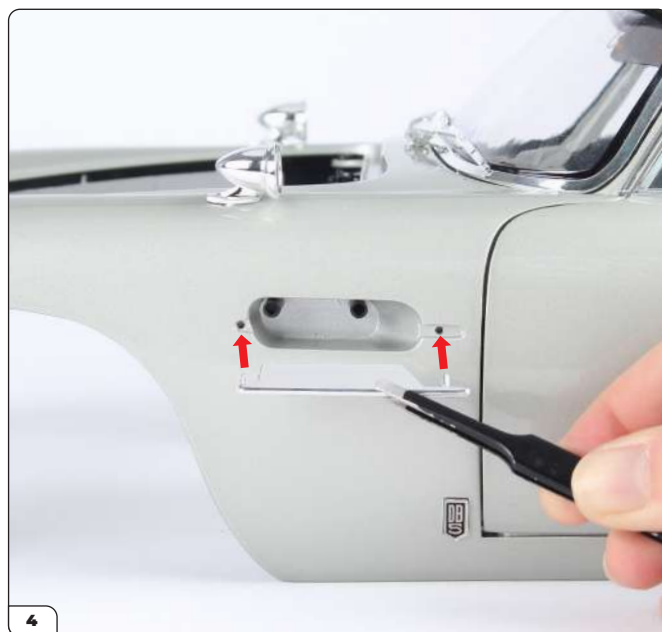
Place the main body assembly on your work surface (use a soft surface to protect the paintwork) with the left side vent facing you, then take one of the casing ejector ports (85-B).



Push the casing ejector port firmly into the hole.



Take the remaining casing ejector port and press it firmly into the other hole.

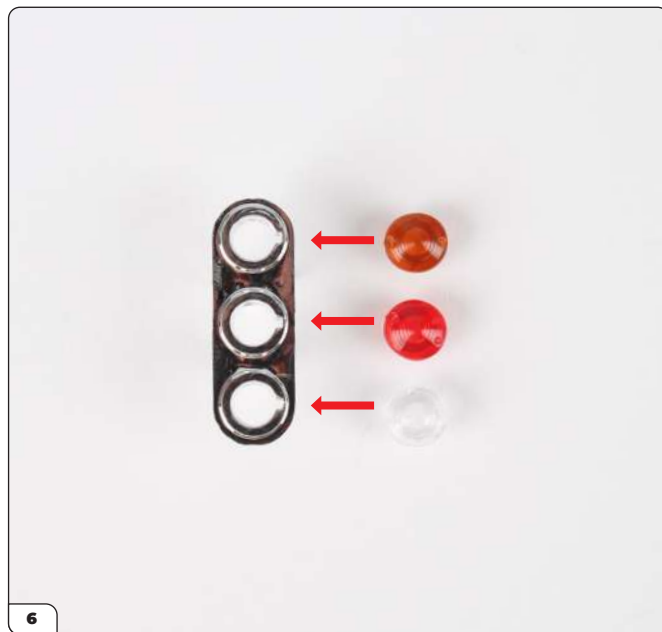


Align the side strake (85-A) with the main body as shown.

Stage 085: Fitting the Left Side Strake, Casing Ejector Ports and Rear Left Lights



Press the side strake firmly in place.



Take the rear light trim (85-C) and the rear lights (85-D, 85-E and 85-F). Align the parts as shown.



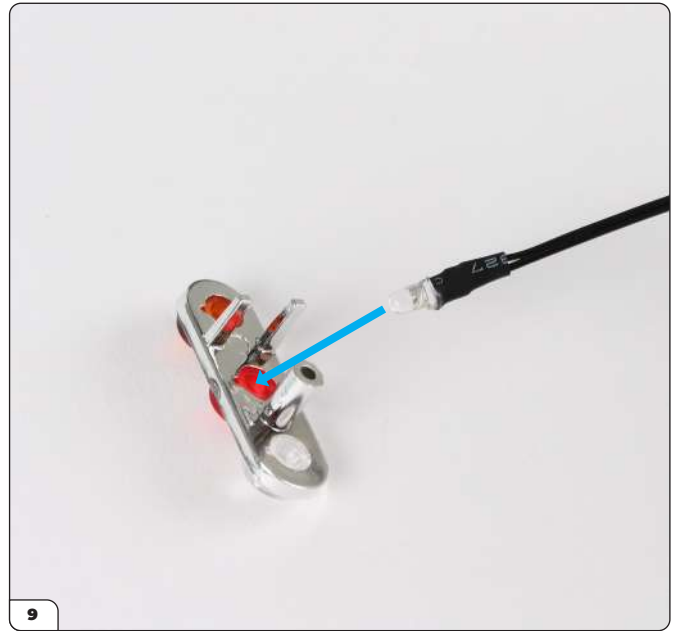
Orient the trim with the fittings on the right-hand side (circled). Push the orange indicator light (85-F) into the top hole.



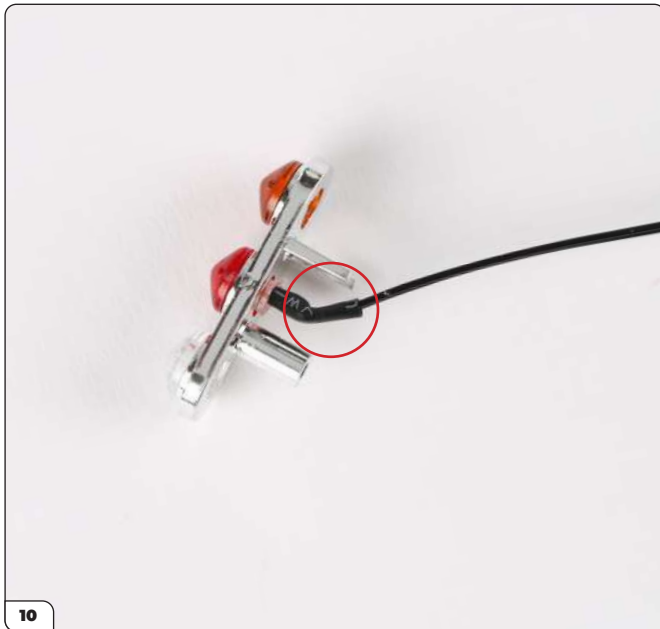
Stage 085: Fitting the Left Side Strake, Casing Ejector Ports and Rear Left Lights



Press the red brake light (85-E) into the middle hole and the transparent reverse light (85-D) into the bottom hole.



From the other side, push the brake light LED (85-G) into the brake light.

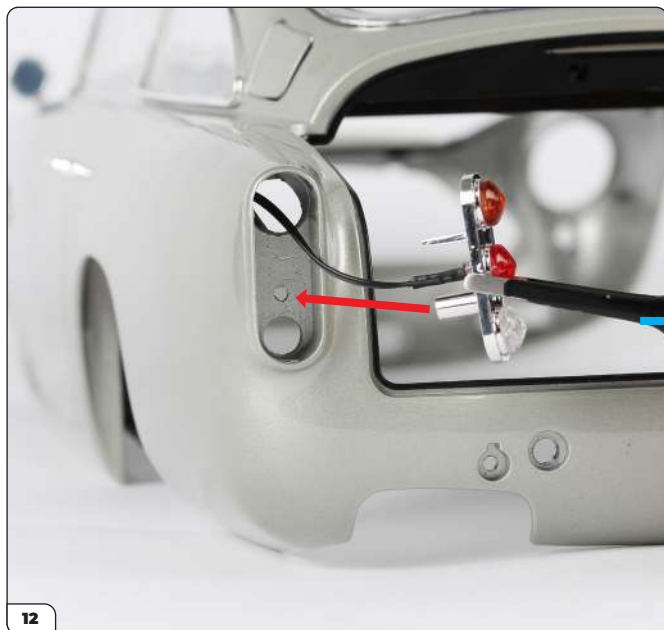


Carefully bend the wire away from the screw post as shown.



Fit the plug through the top hole in the rear left recess on the main body.

Stage 085: Fitting the Left Side Strake, Casing Ejector Ports and Rear Left Lights



Push the rear light trim into the recess, orienting it with the orange indicator on top. If the wire pushes the brake light out when fitting try using transparent glue to hold the brake light in place.



Secure from inside the main body using a PS02 screw.

Stage 085: Fitting the Left Side Strake, Casing Ejector Ports and Rear Left Lights

STAGE COMPLETE



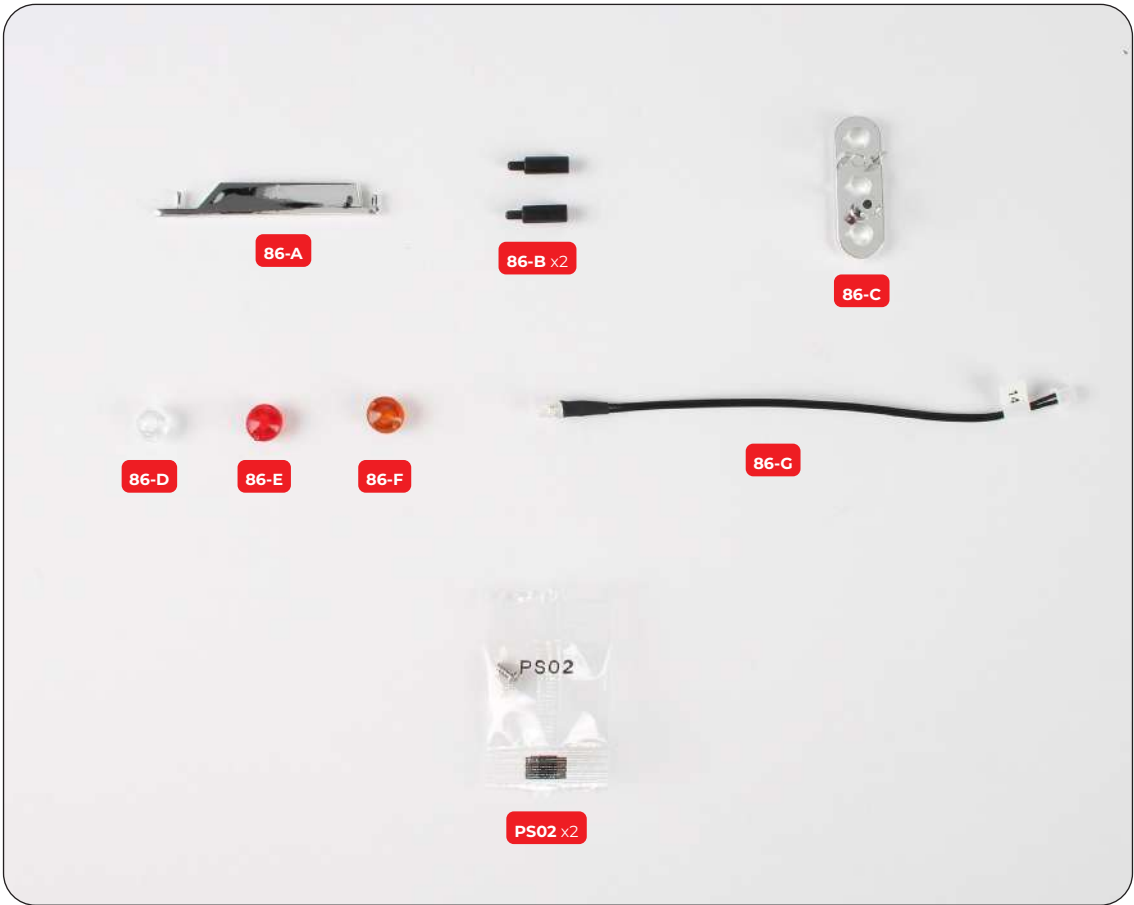
Stage 086: Fitting the Right Side Strake, Casing Ejector Ports and Rear Right Lights

In this stage you'll fit the right casing ejector ports, side strake and rear lights in the same way.



STAGE 086 PARTS LIST

Name
86-A Side strake
86-B Casing ejector port x2
86-C Rear light trim
86-D Reverse light
86-E Brake light
86-F Indicator light
86-G Brake light LED '14'
PS02 screws x2



Stage 086: Fitting the Right Side Strake, Casing Ejector Ports and Rear Right Lights



1 Place the main body assembly on your work surface with the right side vent facing you, then take one of the casing ejector ports (86-B).



2 Push the casing ejector port firmly into the hole.



3 Take the remaining casing ejector port and press it firmly into the other hole.

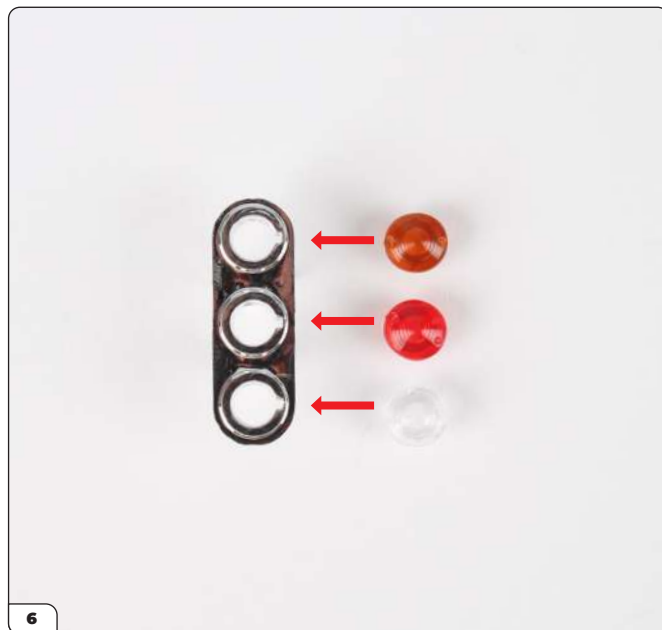


4 Align the side strake (86-A) with the main body.

Stage 086: Fitting the Right Side Strake, Casing Ejector Ports and Rear Right Lights



Press the side strake firmly in place.



Take the rear light trim (86-C) and the rear lights (86-D, 86-E and 86-F). Align the parts as shown.



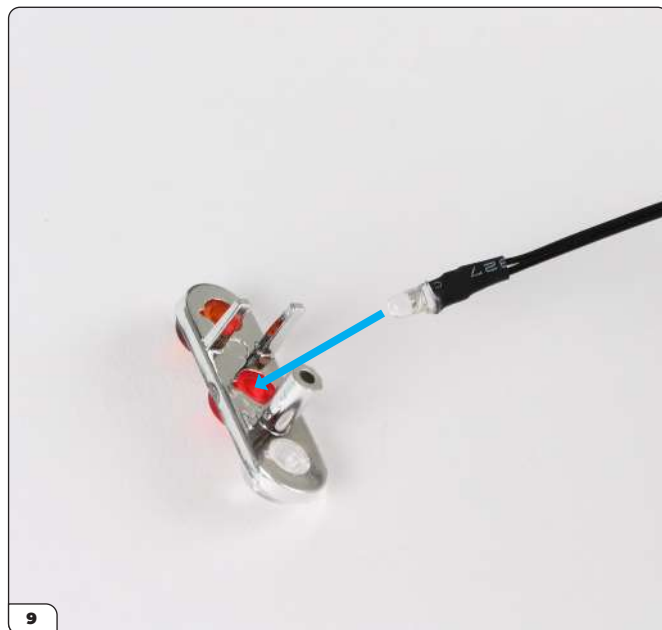
Orient the trim with the fittings on the right-hand side (circled). Push the orange indicator light (86-F) into the top hole.



Stage 086: Fitting the Right Side Strake, Casing Ejector Ports and Rear Right Lights



Press the red brake light (86-E) into the middle hole and the transparent reverse light (86-D) into the bottom hole.



From the other side, push the brake light LED (86-G) into the brake light.



Carefully bend the wire away from the screw post as shown.



Fit the plug through the top hole in the rear right recess on the main body.

Stage 086: Fitting the Right Side Strake, Casing Ejector Ports and Rear Right Lights



Push the rear light trim into the recess, orienting it with the orange indicator on top. If the wire pushes the brake light out when fitting try using transparent glue to hold the brake light in place.



Secure from inside the main body using a PS02 screw.

Stage 086: Fitting the Right Side Strake, Casing Ejector Ports and Rear Right Lights

STAGE COMPLETE



Stage 087: Attaching the Rear Right Wheel Arch

In this stage you'll attach the rear right wheel arch and finish the carpet around the gearstick.



STAGE 087 PARTS LIST

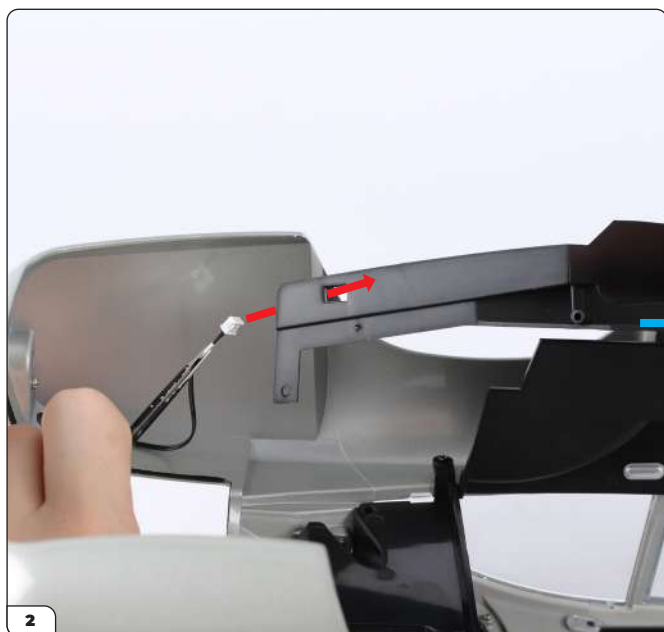
Name
87-A Rear right wheel arch
87-B Gearstick sticker
DS02 screws x2



Stage 087: Attaching the Rear Right Wheel Arch

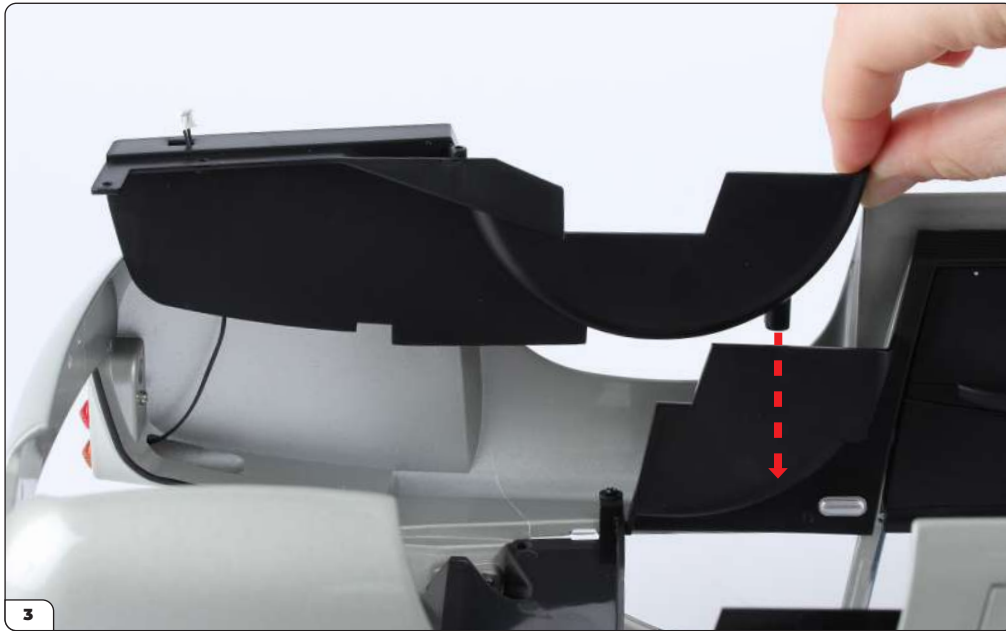


The gearstick sticker (87-B) finishes the carpet in front of the gearstick. Peel the backing paper from the sticker and press it into place as shown.



Place the main body upside down on your work surface. Take the rear right wheel arch (87-A) and fit the wire plug (No. 14) through the rectangular hole in the wheel arch.

Stage 087: Attaching the Rear Right Wheel Arch



Align the rear right wheel arch as shown.



Push the rear right wheel arch in place.

Stage 087: Attaching the Rear Right Wheel Arch



Secure the rear wheel arch with a DS02 screw.

STAGE COMPLETE



Stage 088: Attaching the Rear Left Wheel Arch

In this stage you'll attach the rear left wheel arch along with the wire for the rear number plate.

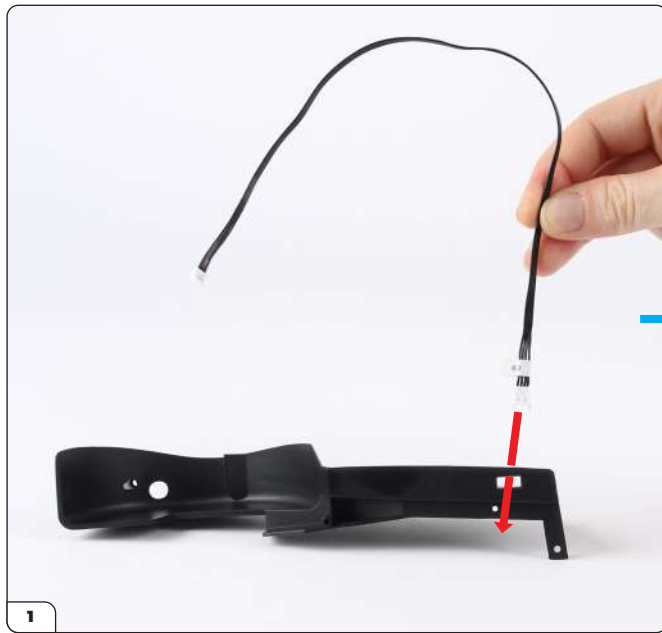


STAGE 088 PARTS LIST

Name
88-A Rear left wheel arch
88-B Rear number plate wire '09'
DS02 screws x2



Stage 088: Attaching the Rear Left Wheel Arch



Take the rear number plate wire (88-B) and align it with the rectangular hole in the rear left wheel arch (88-A). Fit the socket end (with the '09' label) through the hole.



Bend the plug end of the cable so that it comes through the gap as highlighted by the arrow.

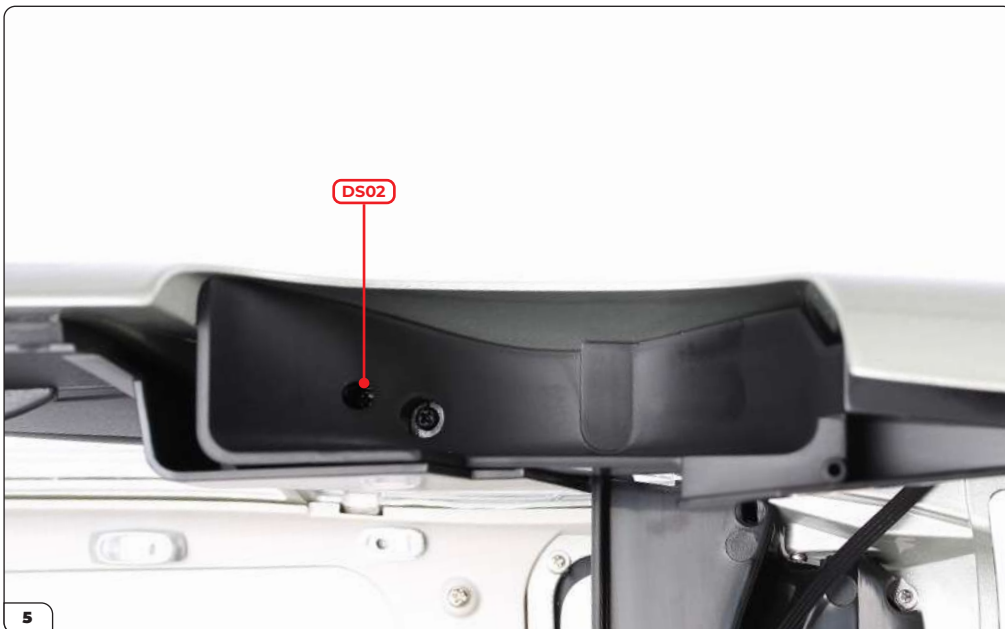


Place the main body upside down on your work surface. Fit the wire plug (No. 13) through the rectangular hole in the wheel arch as shown.

Stage 088: Attaching the Rear Left Wheel Arch



Push the left rear wheel arch in place.



Secure with a DS02 screw.

Stage 088: Attaching the Rear Left Wheel Arch

STAGE COMPLETE



Stage 089: Mounting the Rear Frame and Boot Hinges

In this stage you'll mount the rear frame onto the rear wheel arches and fix the boot hinges in place. You'll also assemble the rear number plate lights to fit in a later stage.



STAGE 089 PARTS LIST

Name	Name
89-A Rear frame	89-H Boot hinge bracket
89-B Rear number plate light mount	89-I Rear number plate light (L)
89-C Rear number plate light trim	89-J Rear number plate light (R)
89-D Rear frame plug x2	89-K Aston Martin badge
89-E Boot hinge (L)	PS03 screws x4
89-F Boot hinge (R)	PS05 screws x5
89-G Boot latch	DS10 screws x3



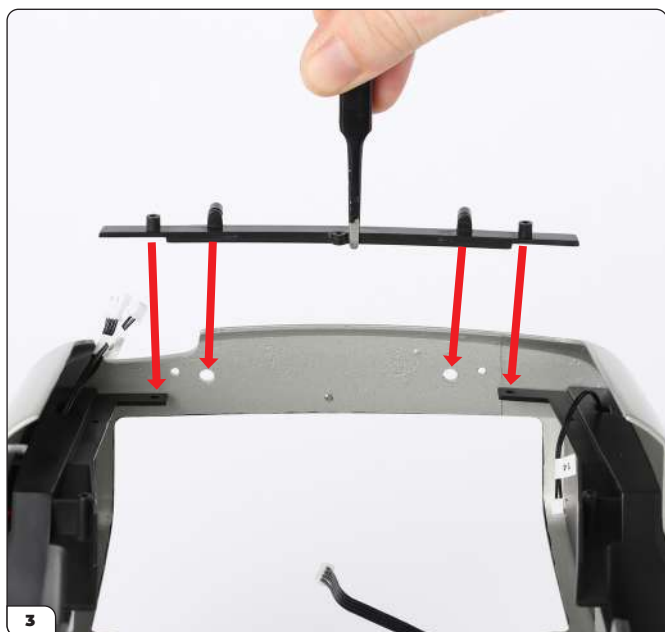
Stage 089: Mounting the Rear Frame and Boot Hinges



Place the main body assembly on your work surface. Press the boot latch (89-G) into the three holes. The latch can only fit in one orientation.



Secure the latch with a PS03 screw.



Take the rear frame (89-A) and align it with the rear of the main body as shown.



Push the rear frame in place.

Stage 089: Mounting the Rear Frame and Boot Hinges



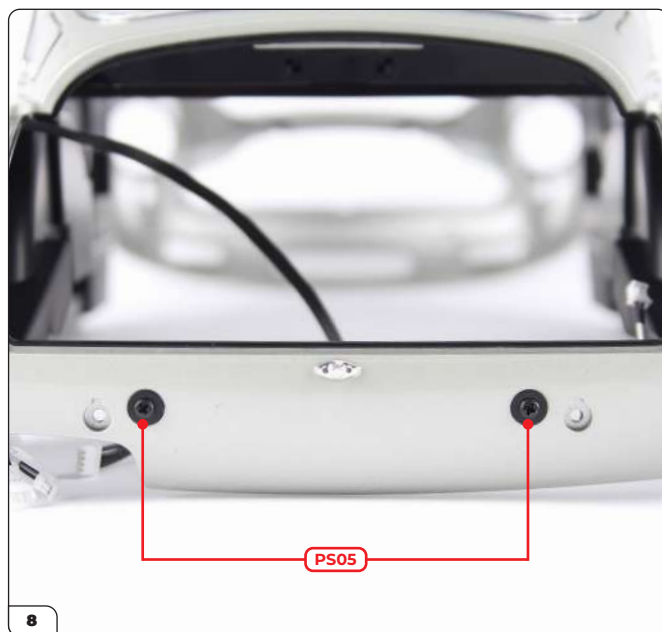
Turn the assembly over and secure the frame to the rear wheel arches with 2x PS05 screws.



Take one of the rear frame plugs (89-D). Fit the plug over the protruding screw post.

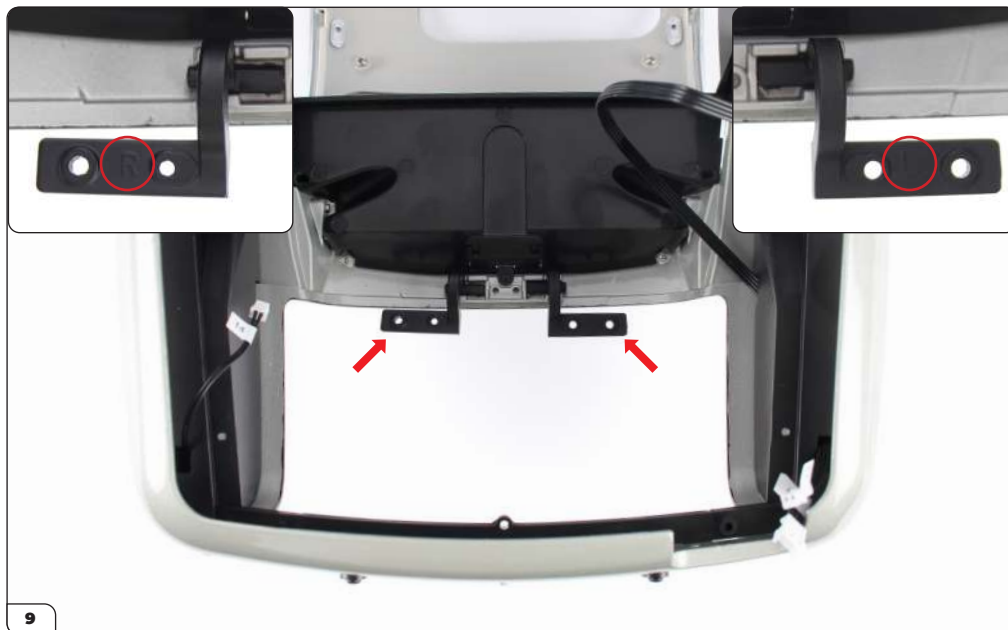


Fit the remaining plug over the other screw post.

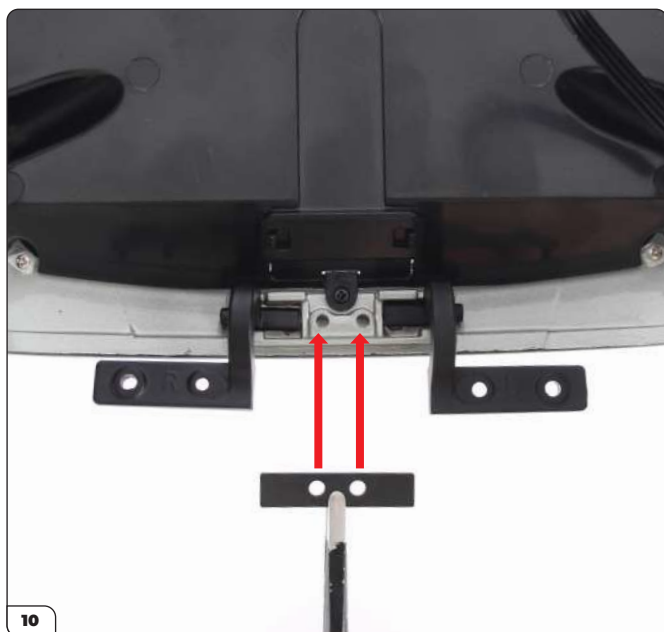


Secure using 2x PS05 screws.

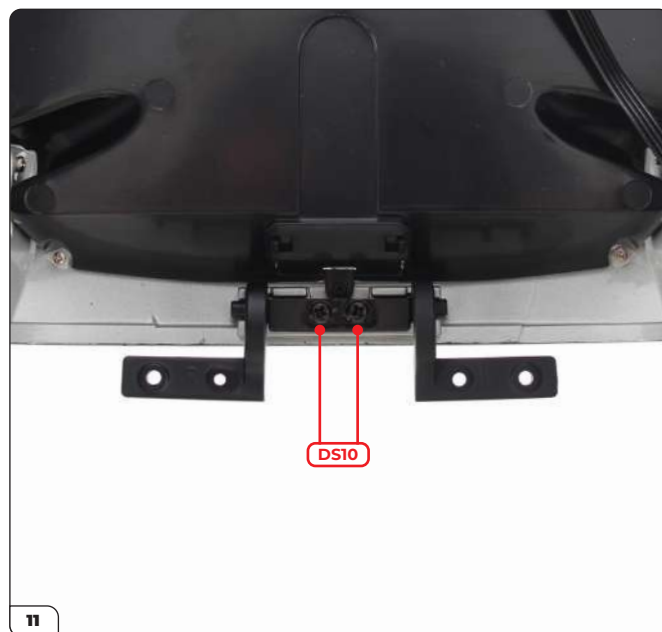
Stage 089: Mounting the Rear Frame and Boot Hinges



Take the right (89-F) and left (89-E) boot hinges. Position them on the main body as shown. The parts are marked with "R" and "L" (inset images).



Place the boot hinge bracket (89-H) over the hinge arms.



Secure the bracket with 2x DS10 screws. Make sure the screws are fully tightened with the hinges in the position shown.

Stage 089: Mounting the Rear Frame and Boot Hinges



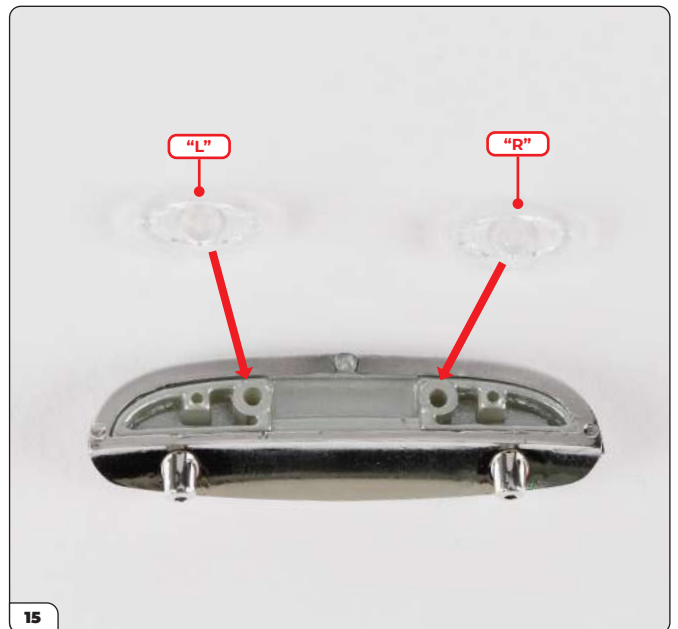
Next take the rear number plate mount (89-B) and trim (89-C) then align them as shown.



Place the mount into the trim.



Take the sprue with the left (89-I) and right (89-J) rear number plate light. The parts are marked with "L" and "R" (circled). Cut the lights from the sprue at the point marked with a dashed line.



Align the left and right lights with the mount as indicated.

Stage 089: Mounting the Rear Frame and Boot Hinges



Press the lights in place then secure with 2x PS03 screws.



Take the Aston Martin badge (89-K) and press it into the mount.

STAGE COMPLETE



Stage 090: Fitting the Boot Lid Carpet

In this stage you'll start preparing the boot lid by fitting carpet to the underside.



STAGE 090 PARTS LIST

Name
90-A Boot lid
90-B Carpet sticker 1
90-C Carpet sticker 2



Stage 090: Fitting the Boot Lid Carpet



Take the boot lid (90-A) and carpet sticker 2 (90-C) then align them as shown.



Peel the backing paper from carpet 2.

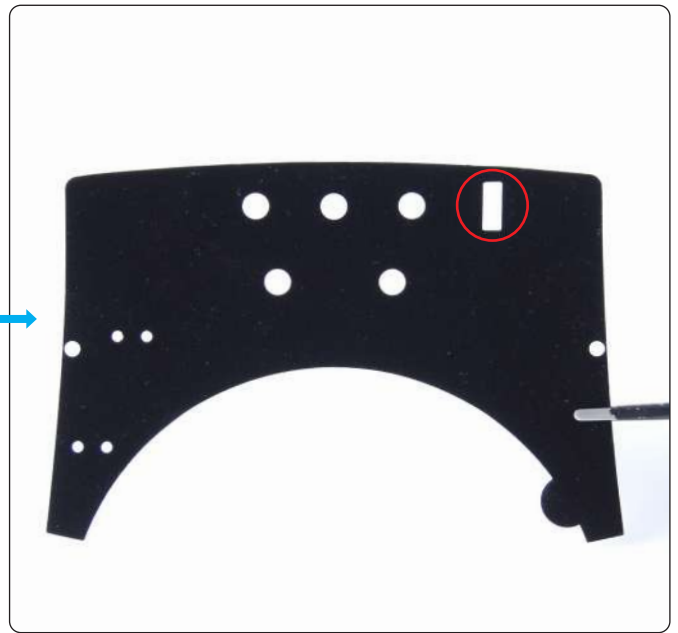


Start to press the carpet onto the boot lid, making sure to fit the holes in the carpet around the pins and screw posts (arrows).



Press the carpet onto the boot lid firmly.

Stage 090: Fitting the Boot Lid Carpet



Take boot lid carpet 1 (90-B) and remove the cut out sections from it as shown. If you are using the non-LED number plates, you do not need to remove the rectangular section (circled).



Remove the backing paper then start to press the sticker onto the boot lid, aligning the cut outs with the pins and screw posts. Note the sticker will overlap carpet 1.

Press the carpet onto the boot lid firmly.

Stage 090: Fitting the Boot Lid Carpet

STAGE COMPLETE



Stage 091: Attaching the Boot Lid Frame and Front Grille

In this stage you'll attach the boot lid frame and fit the front grille.



STAGE 091 PARTS LIST

Name
91-A Boot lid frame
91-B Front grille
DS06 screws x3



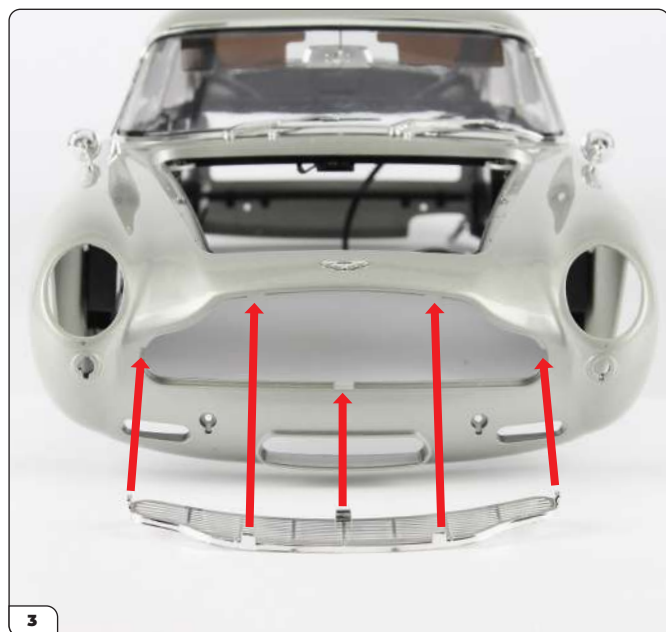
Stage 091: Attaching the Boot Lid Frame and Front Grille



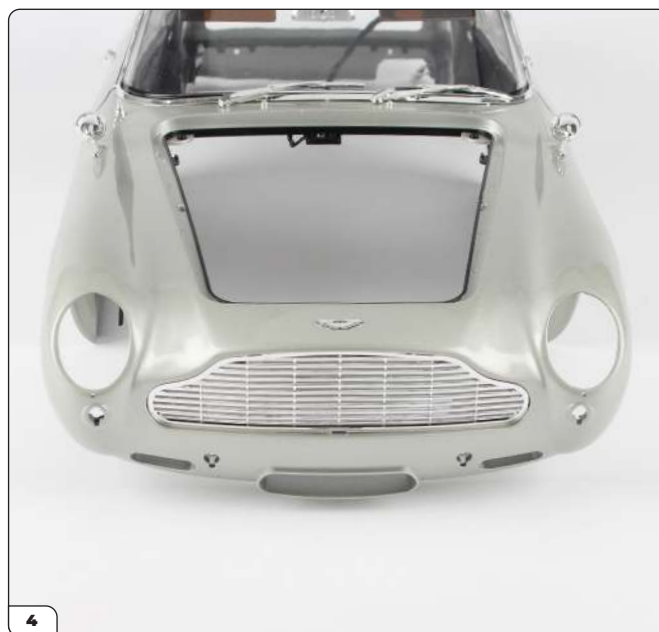
Align the boot lid frame (91-A) with the boot lid (stage 090).



Fit the boot lid frame then secure with 2x DS06 screws.



The front grille (91-B) fits into the front of the main body using five clips (arrows).



Press the front grille in place.

Stage 091: Attaching the Boot Lid Frame and Front Grille

STAGE COMPLETE



Number Plate Options: LED or Non-LED

You have two options for the number plates on your model – the changing LED number plates or the non-LED versions.

Below you can see a comparison between the two versions to help you choose. The rear LED number plate is assembled in Stage 092 and fitted to the boot lid. If you choose to use the LED number plates, continue to Stage 092.

If you prefer to use the non-LED number plates, you can stop at this point as you do not need to follow the instructions for Stage 092. Both front and rear non-LED number plates will be provided in Pack 12, along with instructions on how to fit them. Keep the parts from Stage 092, some will be needed for fitting the non-LED rear number plate.



Stage 092: Attaching the Rear Number Plate and Boot Lid

In this stage you'll build the LED rear number plate then fix it to the boot lid. You'll then attach the boot lid and connect the wiring for the number plate screen.

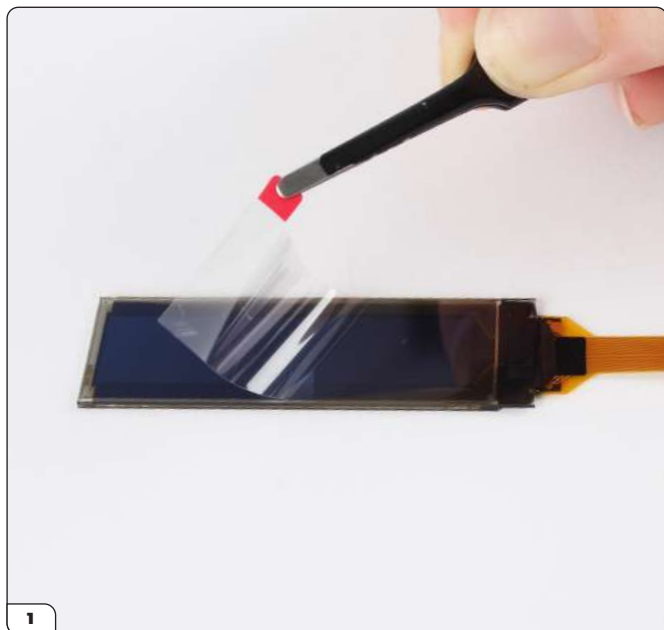


STAGE 092 PARTS LIST

Name
92-A Rear number plate frame front
92-B Rear number plate frame back
92-C Circuit board
92-D Circuit board mount
92-E Rear number plate screen
92-F Wire bracket x2
PS03 screws x5
DS11 screws x5
PS14 screws x4



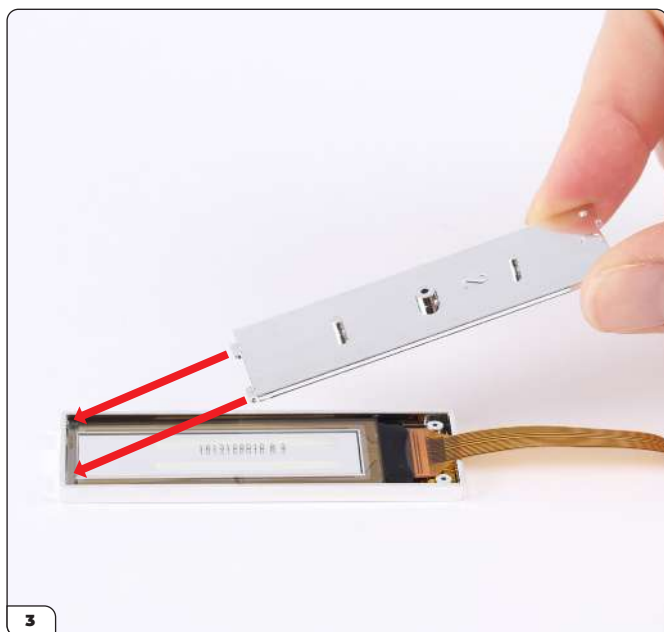
Stage 092: Attaching the Rear Number Plate and Boot Lid



Take the rear number plate screen (92-E) and peel the protective film from it.



Align the screen with the rear number plate frame front (92-A) as shown.



Place the screen into the frame, then align the frame back (92-B) with the assembly.

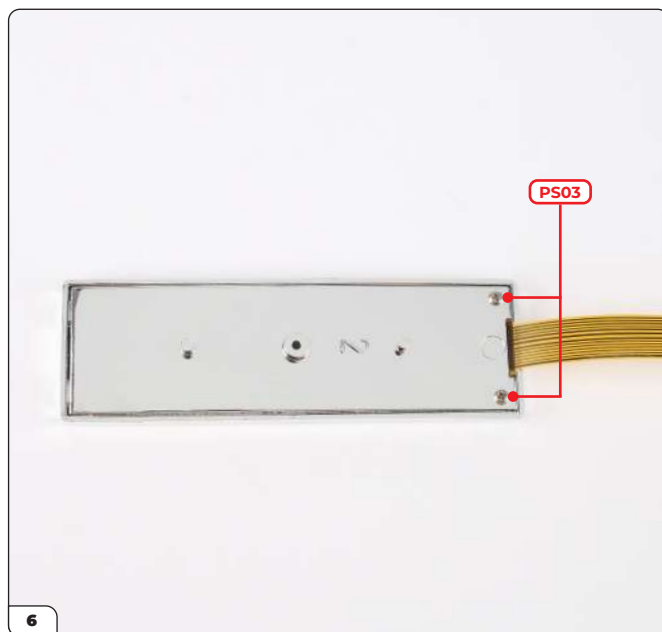


Fit the back in place. You may need to adjust the position of the screen slightly to allow the front and back to fit together.

Stage 092: Attaching the Rear Number Plate and Boot Lid



Turn the number plate over and check the screen is centred (dashed line). Carefully adjust the position by sliding the screen if needed.



Secure the front and back together using 2x PS03 screws.

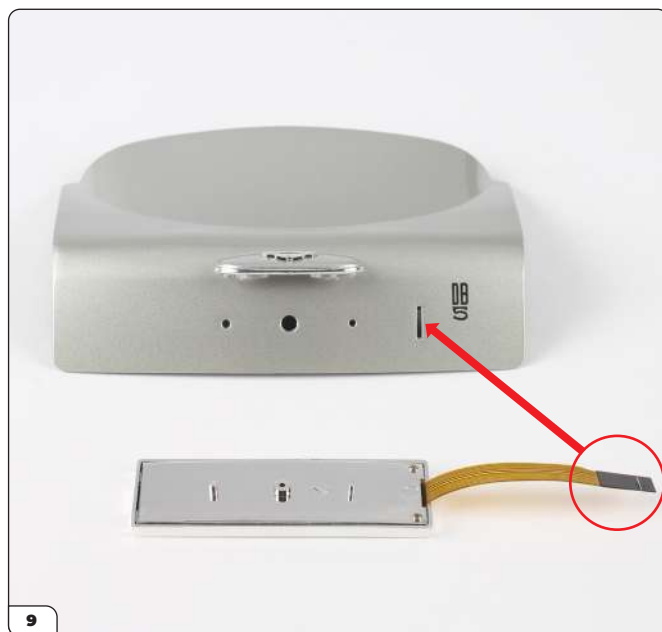


Take the rear number plate light assembly (stage 089) and press it into the two upper holes in the boot lid (stage 091).

Stage 092: Attaching the Rear Number Plate and Boot Lid



Secure from inside with 2x PS03 screws.



Before fitting the rear number plate, push the ribbon cable through the slot in the boot lid.



Align the rear number plate with the boot lid and press it in place, pushing the ribbon cable through at the same time. Make sure the pins and screw post are fully inserted into the holes for the next step.



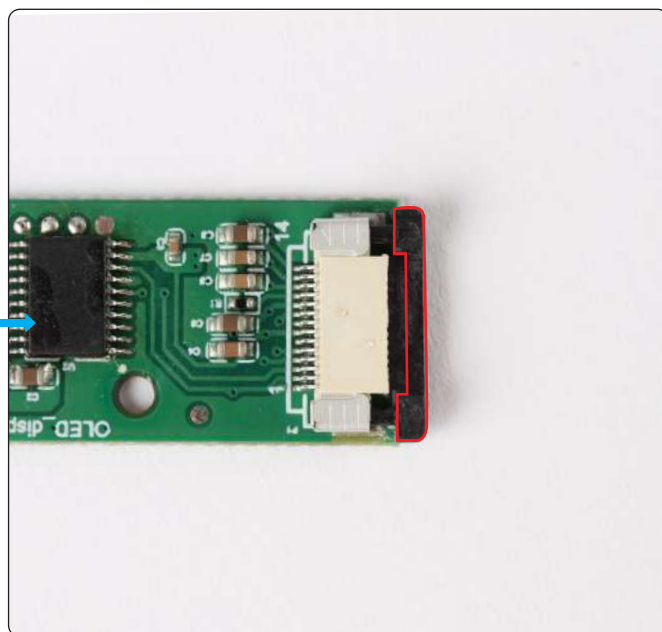
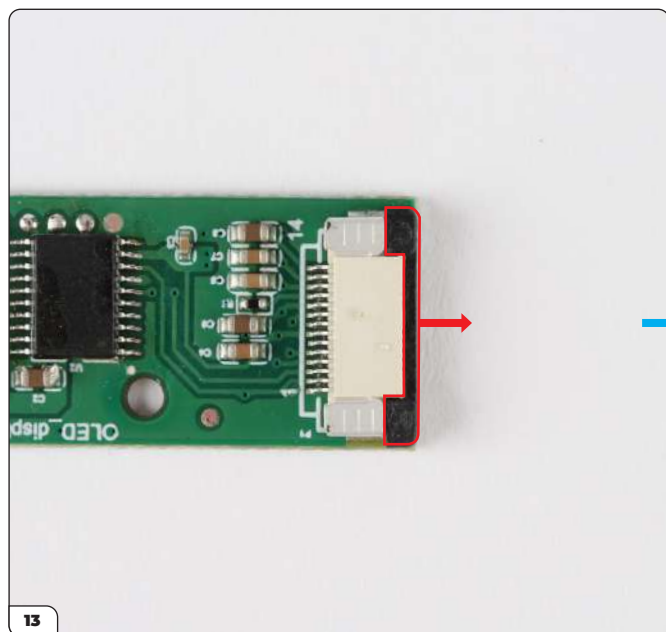
Stage 092: Attaching the Rear Number Plate and Boot Lid



Align the circuit board mount (92-D) with the inside of the boot lid. Press it onto the screw post and pin as shown by the arrows.



Secure the circuit board mount and the number plate with a PS14 screw.

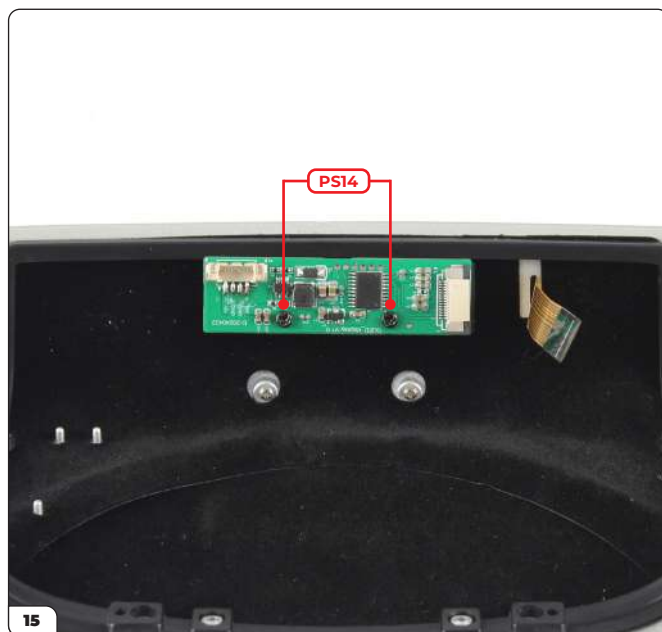


Take the circuit board (92-C) and unlock the socket by sliding the black section out as shown.

Stage 092: Attaching the Rear Number Plate and Boot Lid



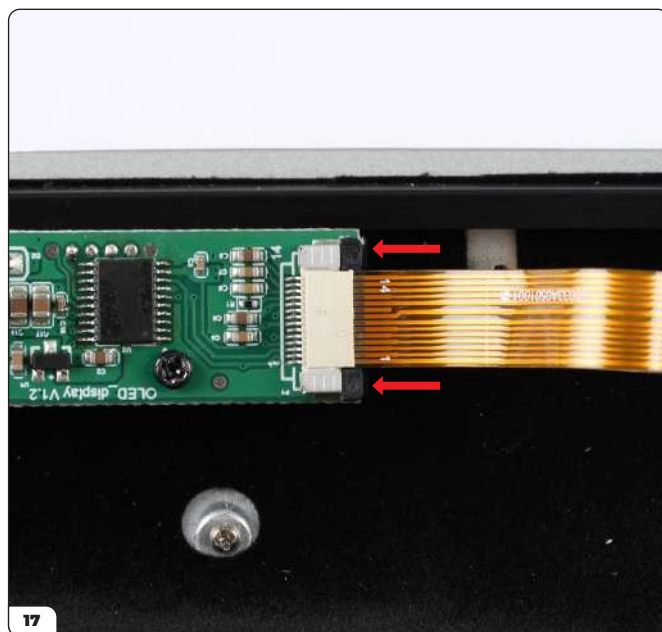
Align the circuit board with the mount as shown.



Position the circuit board over the two screw holes then secure it in place with 2x PS14 screws.

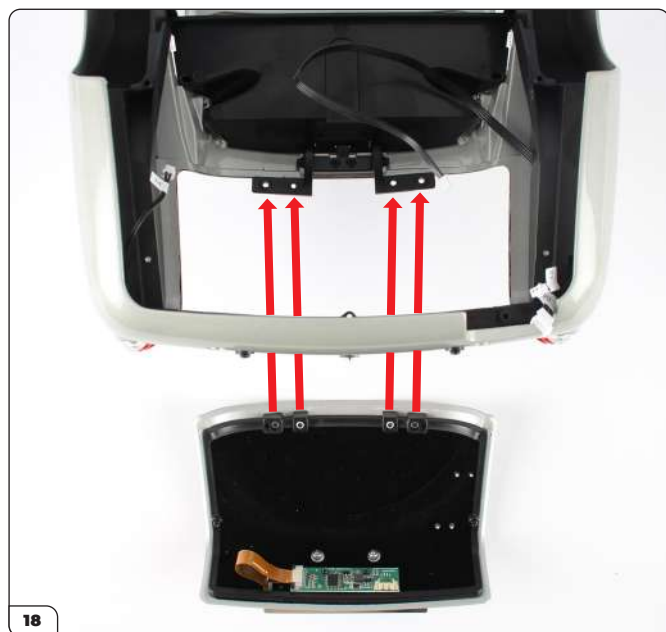


Push the ribbon cable into the unlocked socket.

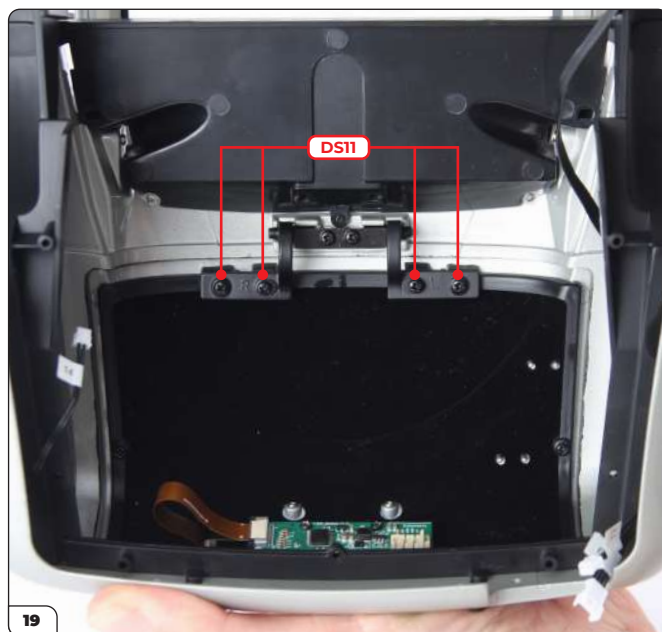


Lock the socket by pushing the black section back in.

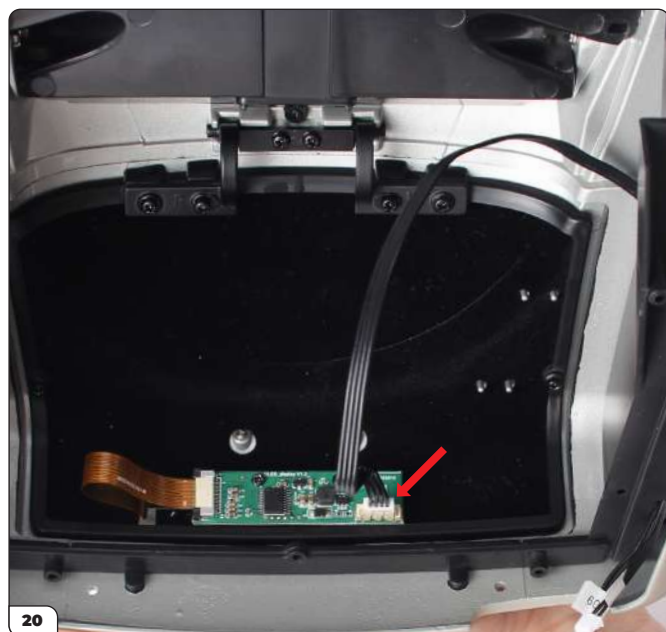
Stage 092: Attaching the Rear Number Plate and Boot Lid



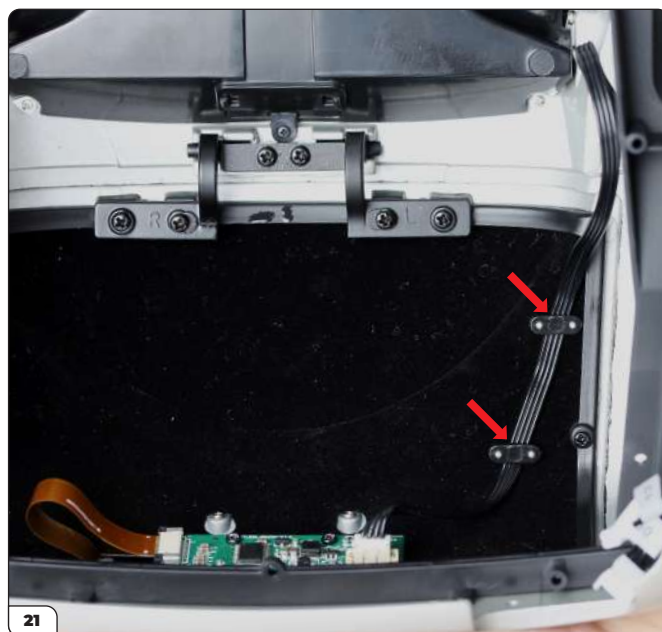
Place the main body upside down on your work surface then align the boot lid with the hinges.



Position the boot lid against the body and secure the boot lid to the hinges using 4x DS11 screws.



Plug the rear number plate wire (No. 09) into the circuit board.



Secure the wire to the boot lid carpet using the two wire brackets (92-F) as shown.

Stage 092: Attaching the Rear Number Plate and Boot Lid

STAGE COMPLETE

